

# Shed Accessory Anchor

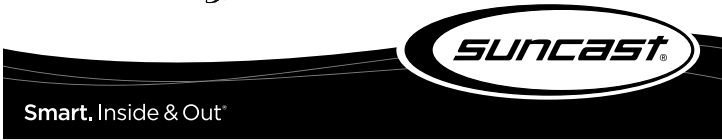
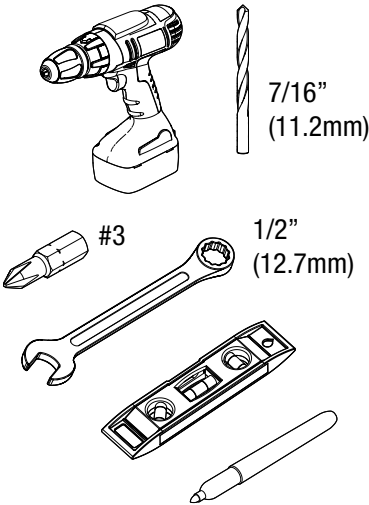
## INSTALLATION INSTRUCTIONS



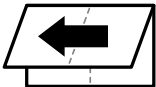
### Tools Required

Outil requis

Herramientas necesarias

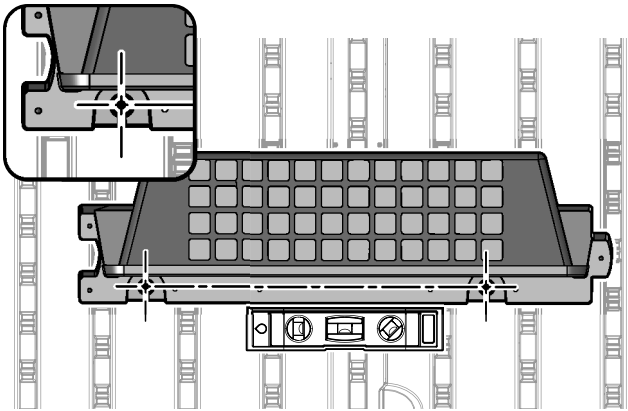


© 2022 Suncast Corporation, Batavia, IL

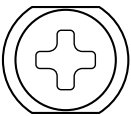
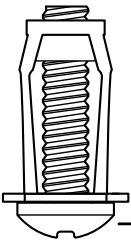
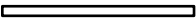
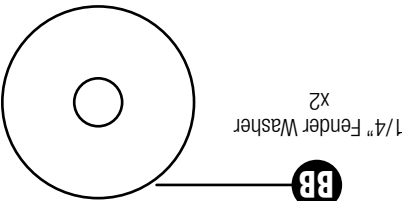


Using a level, a marker and your shed accessory as a template, position and mark wall anchor pilot hole locations. Use the EZ Bolt holes on your accessory as a guide.

**Caution:** Use only flat panel areas for anchor placement.



## Assembly



#10 x 1" Toggle Bolt x2

AA

1/4" Fender Washer x2

BB

## Parts

Hardware Bag

## Assembly (continued)

- 2** Using a 7/16-inch drill bit and a power drill, create pilot holes for wall anchors (AA) at the previously marked locations.

**Caution:** Drilling through the inner wall of the shed will be very easy. Once the wall thickness is penetrated, it may grab the drill bit and pull the bit through the drilled hole. Be careful to only drill through the inner wall of the shed side panel.



- 3** Insert a wall anchor (AA) into each of the pilot holes. Ensure the wall anchor flanges are fully inserted and flush with wall surface.



- 4** While holding one wall anchor (AA) in place using a 1/2-inch open-end wrench on the flats of the wall anchor flange as shown, use a power drill with a #3 phillips screwdriver bit to tighten and secure the anchor. Tighten the anchor securely but do not overtighten. Once tightened, remove the bolt from the anchor. Repeat for the remaining wall anchor.



- 5** Position and hold the shed accessory over the wall anchors (AA). Using one previously removed anchor bolt with provided washer (BB) at each anchor location, secure the accessory to the shed wall. Do not over tighten.

